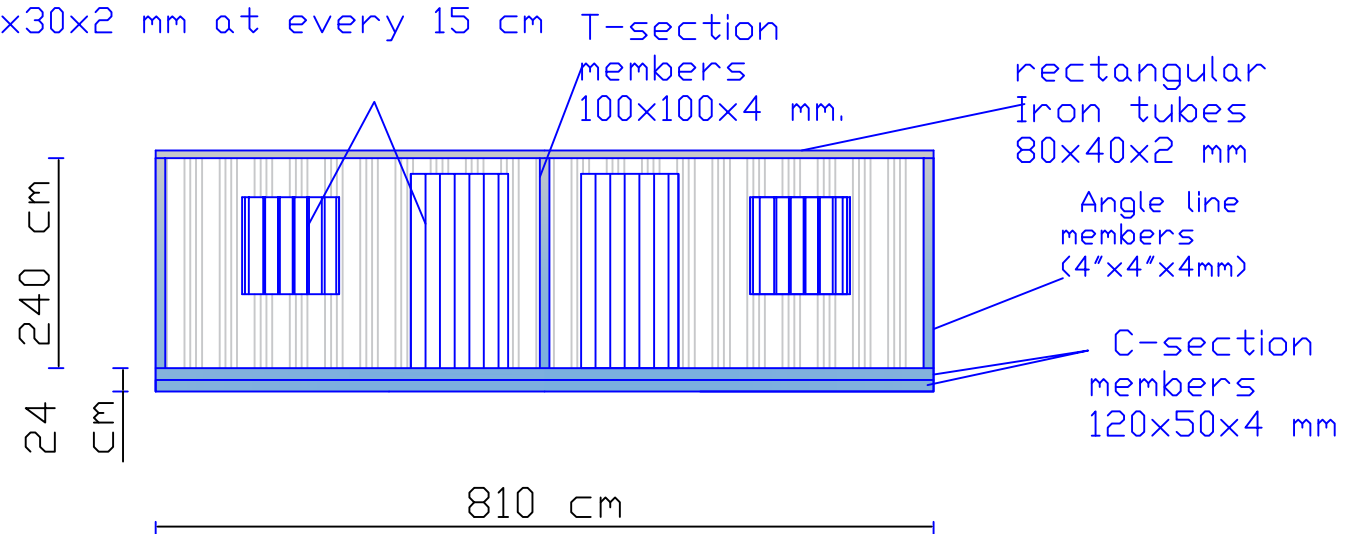




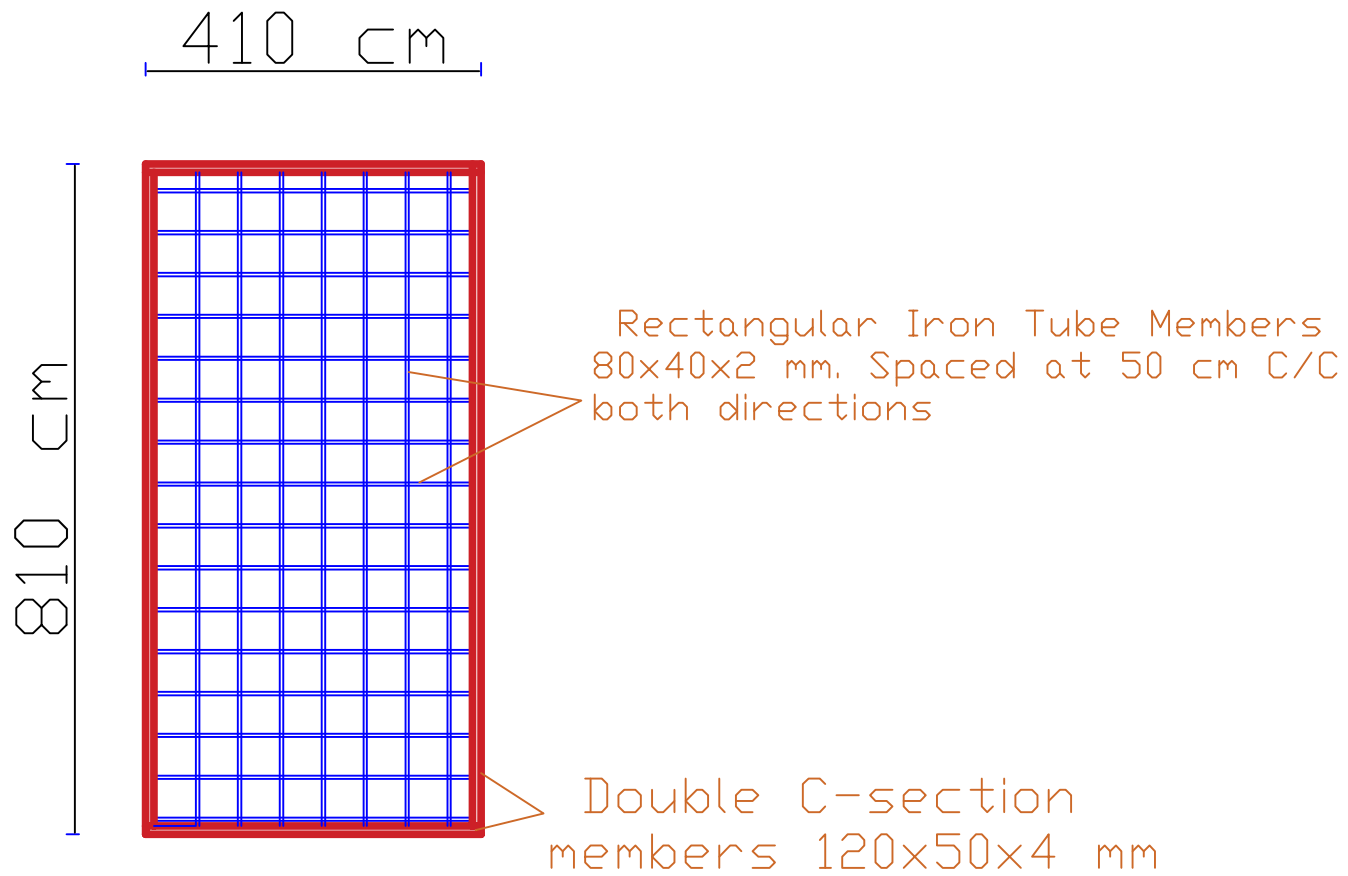
Prefabricated caravan and shading roof design drawings

Reference code:	SYRIA-TA-2021-072
Project:	Supply and installation of Caravan in Roj Camp - NES
Date:	15 July 2021
No. of sheets:	6 (six)

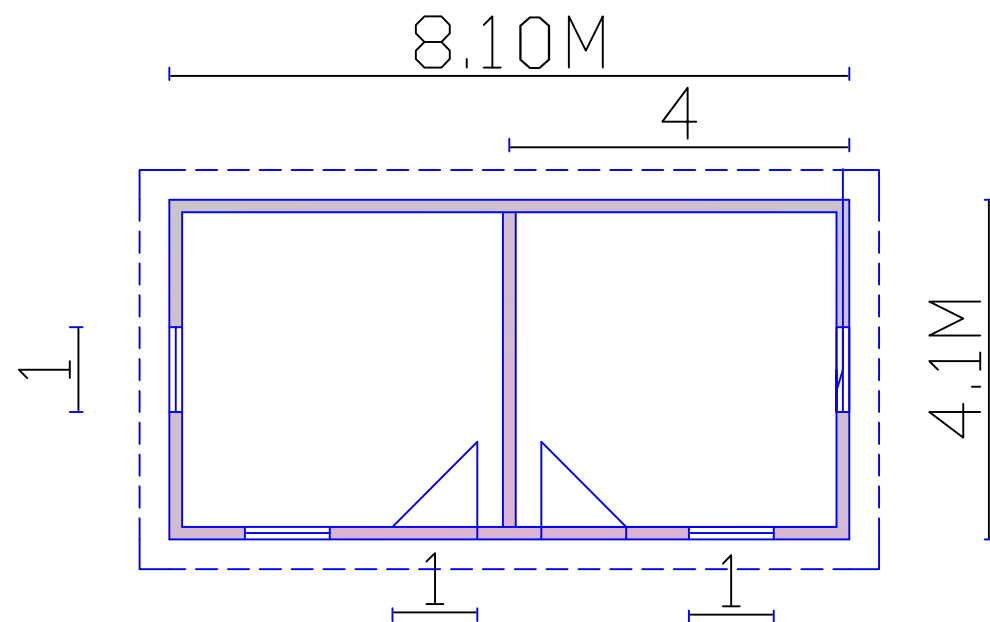
metal protection mesh (grill) for
the doors and windows consisting
of a perimeter metal frame
30x20x2 mm with internal metal
frames 20x30x2 mm at every 15 cm



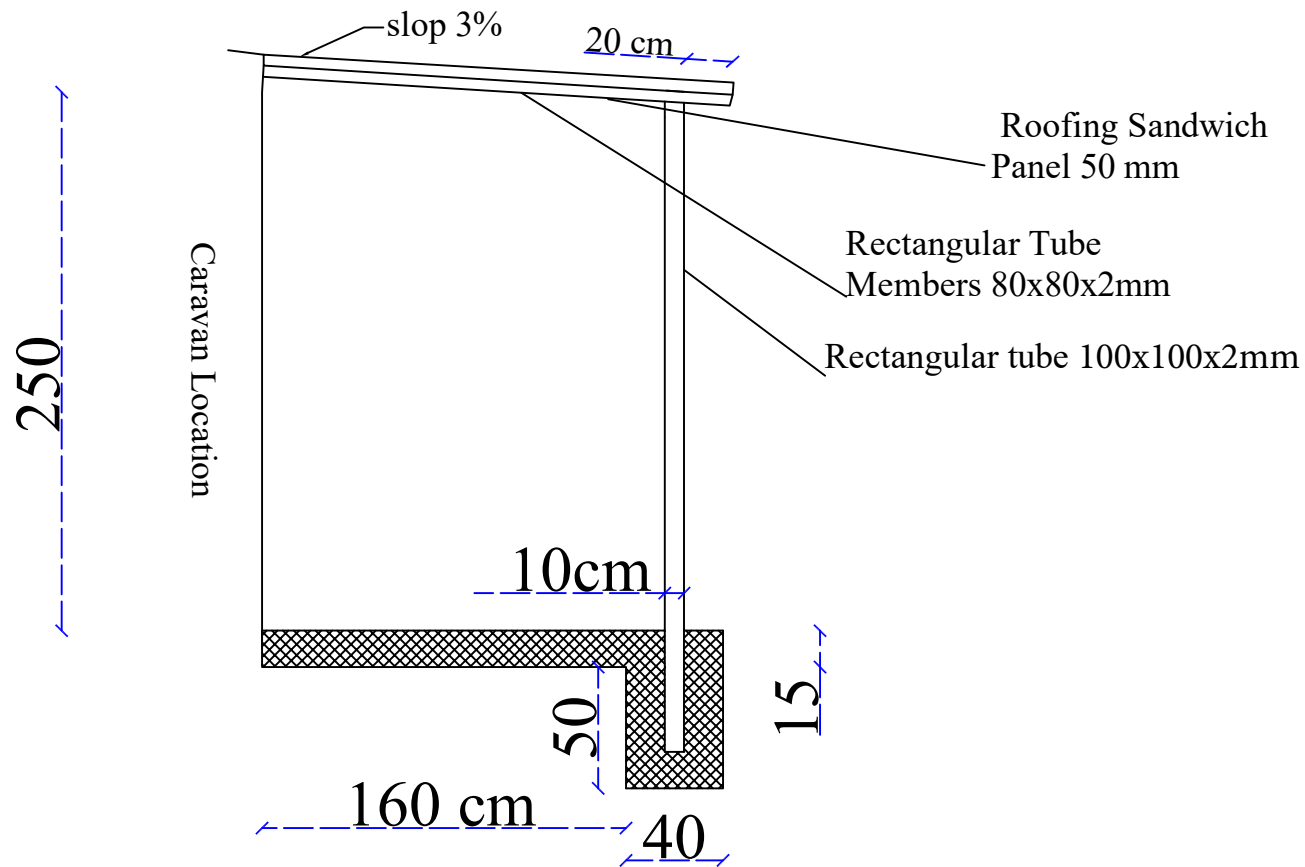
Front view of the caravan



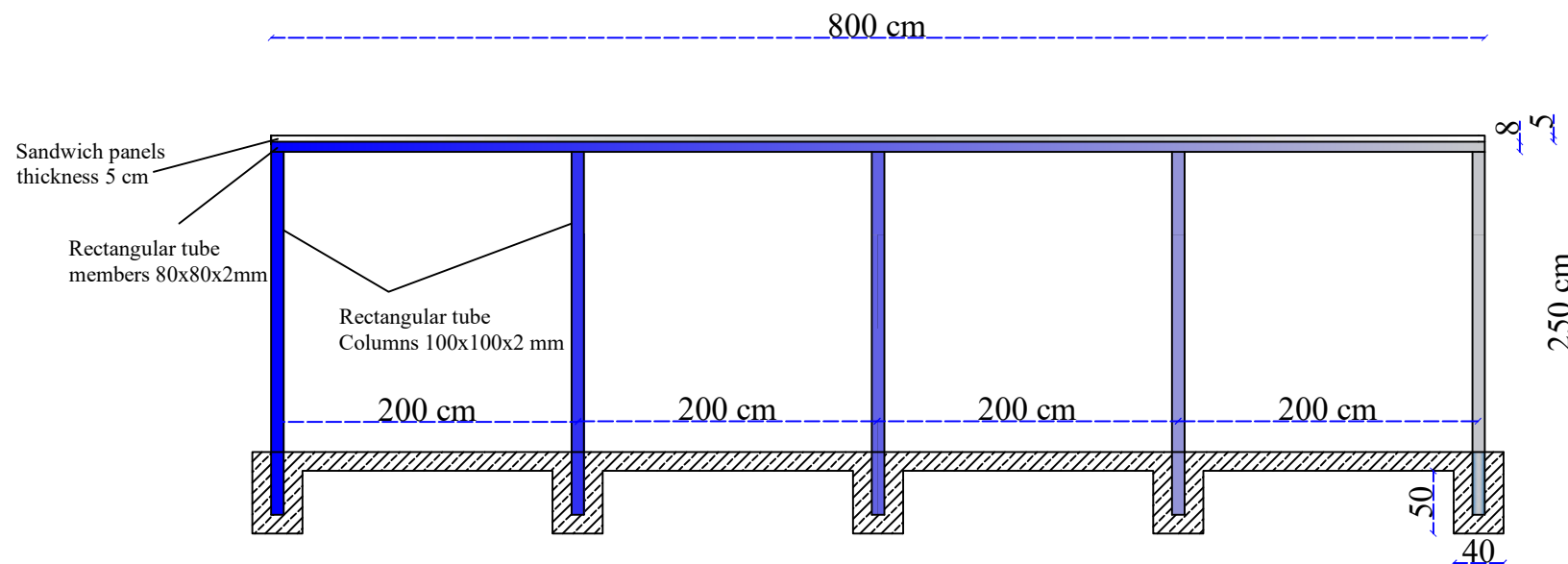
Base structure of the caravan



Plan view of the caravan



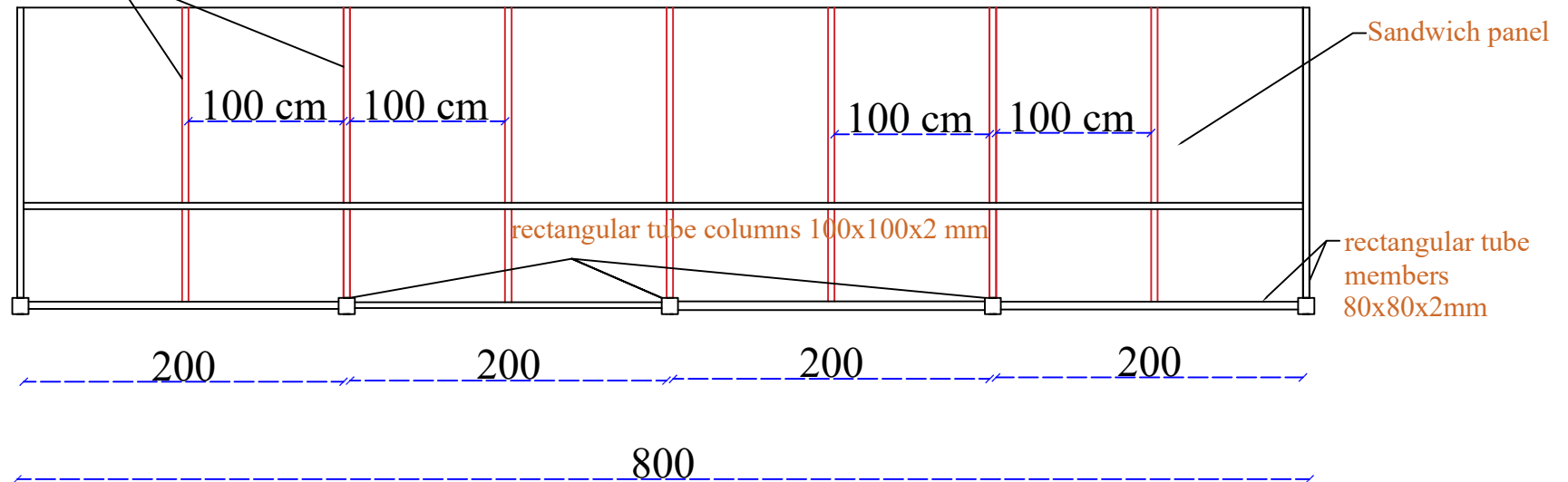
Side view of the shading roof



Front view of the shading roof

Rectangular Tube Members
40x60x2 mm

Caravan Location



Top view of the shading roof